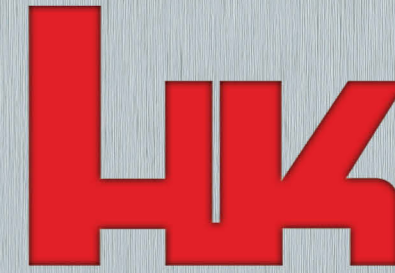
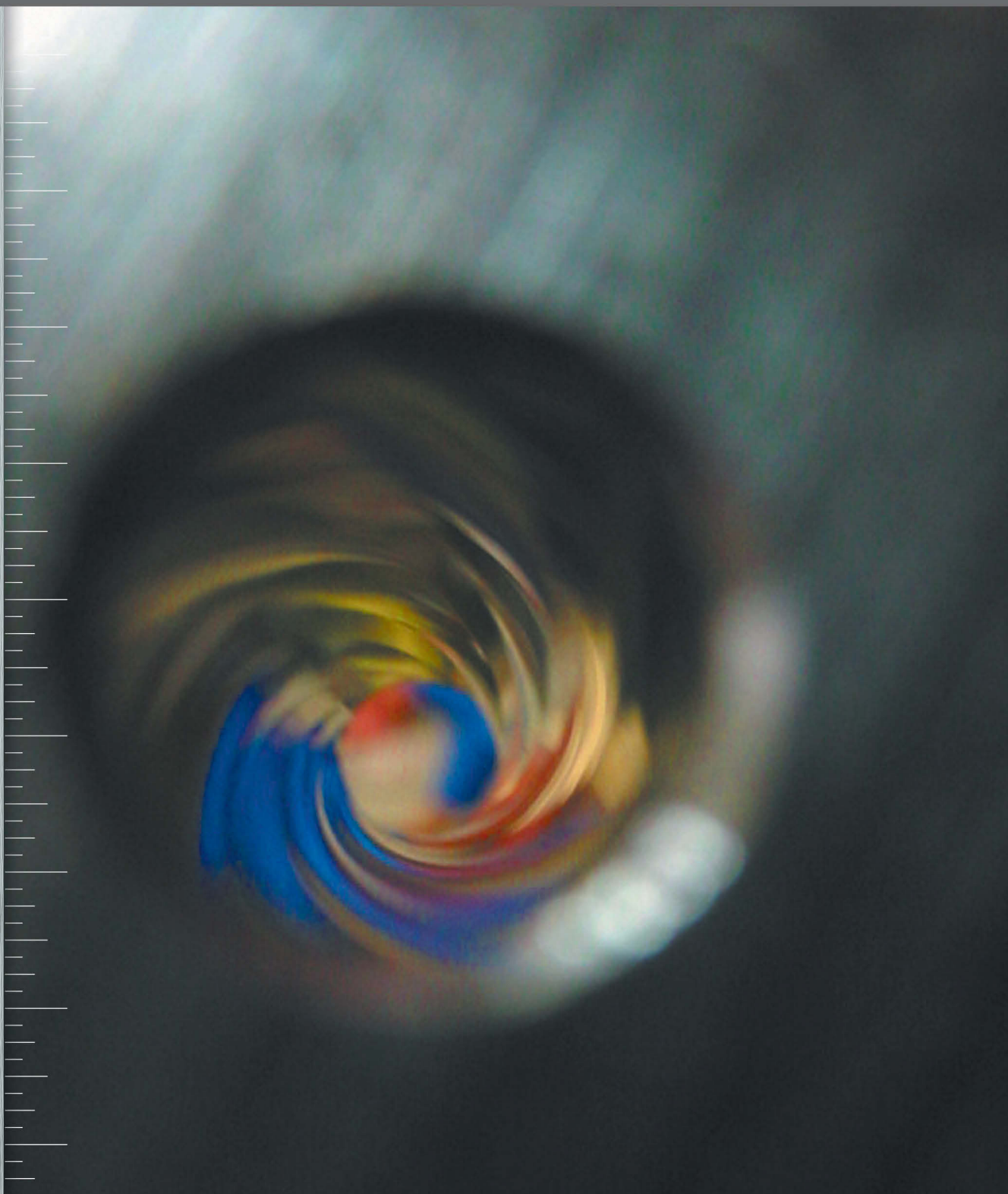


Id.-Nr. 988295



S P O R T & S E C U R I T Y





In the year 1949, the firm of Heckler & Koch was founded by Edmund Heckler, Theodor Koch and Alex Seidel. With the start of manufacture of the standard rifle of the newly founded Federal German Armed Forces in 1956, the name Heckler & Koch quickly became synonymous for leading technology and best quality in small arms.

Heckler & Koch products meet the strictest requirements of security forces, special and military units and guarantee HK typical attributes such as highest quality, innovation and reliability.

HISTORY	2
TABLE OF CONTENTS	3
P30 / P30L	4/5
P2000	6/7
USP COMPACT	8/9
USP STANDARD / P8 / CUSTOM SPORT	10/11
USP EXPERT	12/13
USP ELITE	14/15
USP TACTICAL / MARK 23	16/17
USC SELFLOADING CARBINE	18/19
SL8 TARGET RIFLE	20/21
MR223/308 TARGET RIFLE	22/23
ACCESSORIES MR223/308 SPECIFICATIONS	24/25
TECHNICAL ACCESSORIES ACCESSORIES USP	26/27

THE HECKLER & KOCH P30 / P30L 9MM x 19

Flexibility – Functionality - Safety

The P30 is one of the most modern police pistols of our time. During the development the most important requirements were flexibility, functionality and safety. Ergonomics of the grip have markedly been improved by interchangeable backstrap inserts and lateral plates. In combination with the ambidextrous operating controls, this pistol can be individually adapted to almost any user.

No compromises have been made regarding safety. The P30 has an automatic hammer and firing pin safety that eliminates the need for a manual safety.

The new loaded chamber indicator, which is easily seen and felt, positively indicates a loaded chamber. Also new is the open square notch rear sight with luminous contrast points (no tritium), allowing an exact target acquisition under poor lighting conditions.



Pistol	Caliber	Length	Barrel length	Sight Radius	Height/width ¹	Weight ²	Single Action	Double Action	CDA ³	Mag. capacity
P30 / P30S	9mm x 19	181 mm	98 mm	148,5 mm	138/34,8 mm	740 g	24 N	51 N	32,5 N	15 cartridges
P30 / P30S	.40 S&W	181 mm	98 mm	148,5 mm	138/34,8 mm	780 g	24 N	51 N	32,5 N	13 cartridges
P30 L / P30 LS	9mm x 19	196 mm	113 mm	163,5 mm	138/34,8 mm	780 g	24 N	51 N	32,5 N	15 cartridges
P30 L / P30 LS	.40 S&W	196 mm	113 mm	163,5 mm	138/34,8 mm	820 g	24 N	51 N	32,5 N	13 cartridges

¹P30S/P30LS with ambidextrous safety lever, Width = 38,8 mm, ²With empty magazine, ³Depending on trigger variant from 24 - 32,5 N.



Interchangeable backstraps



Long version

The most important features at a glance:

- Interchangeable backstraps
- Inserts and lateral plates
- Open square notch rear sight with luminous contrast points
- Loaded chamber indicator, easily seen and felt
- Ambidextrous operating controls
- Integrated Picatinny rail
- Further trigger systems as with the P2000



THE HECKLER & KOCH P2000 / P2000 SK

P2000 9mm x 19 / .40 S&W

Performance specifications elaborated at the beginning of the design phase for the P2000 were brief, concise and extremely demanding. They reflected the difficulties of today's police service and the resulting technical requirements made on a police pistol. Operational handling related to stressful situations had to be effectively reduced to a minimum in order to ensure utmost safety.

Equally paramount was to optimize ergonomic design for increased hit probability – particularly during instinctive shooting.

The P2000 has a modular trigger and decocking system capable of being individually tailored to different requirements.

P2000

Innovative safety trigger with concealed cocking piece in the hammer and centrally arranged decocking lever for firing in the Single Action/Double Action (SA/DA) Mode.

P2000 V1

Innovative safety trigger with concealed cocking piece in the hammer without spur, with uniform trigger pull (Combat Defence Action, approx. 20 N) from the first shot to the last, without decocking

P2000 V2

Like P2000 V1, however CDA Trigger pull approx. 32.5 N

P2000 V3

Conventional SA/DA Trigger and hammer with decocking function

P2000 V4

Like P2000 V1, however CDA Trigger pull approx. 27.5 N

P2000 V5

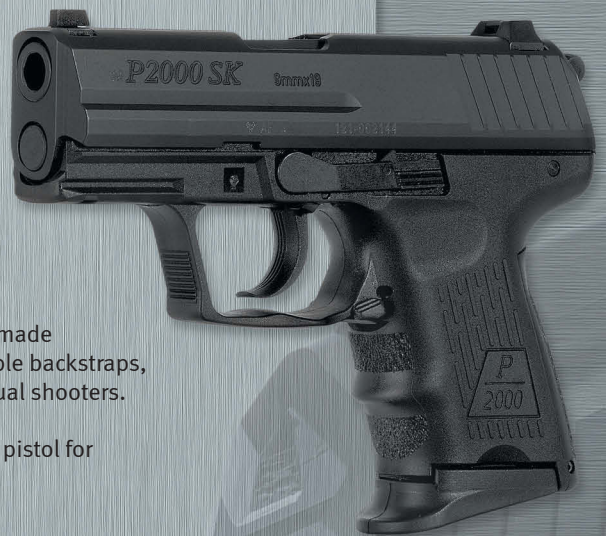
Conventional "DA Only" Trigger with 35 N

P2000 SK 9mm x 19 / .40 S&W

Compact, lightweight and handy: The new P2000 Subcompact combines all characteristics expected of it for authority and civilian use.

The P2000 Subcompact is based on the P2000. Irrespective of the small and lightweight design, no compromises have been made regarding accuracy and reliability. Thanks to two interchangeable backstraps, the weapon can easily be adapted to the hand sizes of individual shooters.

Its small external dimensions and low weight make it the ideal pistol for concealed carry use.



Pistol	Caliber	Length	Barrel length	Sight Radius	Height/width	Weight ¹	Single Action	Double Action	Sights	Mag. capacity
P2000	9mm x 19	174 mm	93 mm	141 mm	129/34,8 mm	710 g	20 N	50 N	fixed	13 cartridges
P2000	.40 S&W	174 mm	93 mm	141 mm	129/34,8 mm	750 g	20 N	50 N	fixed	12 cartridges

¹ With empty magazine



P2000
with extended
magazine floorplate



P2000 SK V3



P2000 V3

Figure Full Size

Those demands have been fulfilled without compromise:

- Maximum safety and reliable functioning possible under all conditions
- Optimum ergonomics capable of being tailored to each individual user
- Simple and safe operation both for right and left-handed shooters
- Synthetic buffer element similar to the USP Compact
- High ammunition-compatibility

Pistol	Caliber	Length	Barrellength	Sight Radius	Height/width	Weight ¹	Single Action	Double Action	Sights	Mag. capacity
P2000 SK*	9mm x 19	162,5 mm	83 mm	131,5 mm	115,5/34,8 mm	680 g	20 N	50 N	fixed	10 cartridges
P2000 SK*	.40 S&W	162,5 mm	83 mm	131,5 mm	115,5/34,8 mm	720 g	20 N	50 N	fixed	9 cartridges

¹ With empty magazine



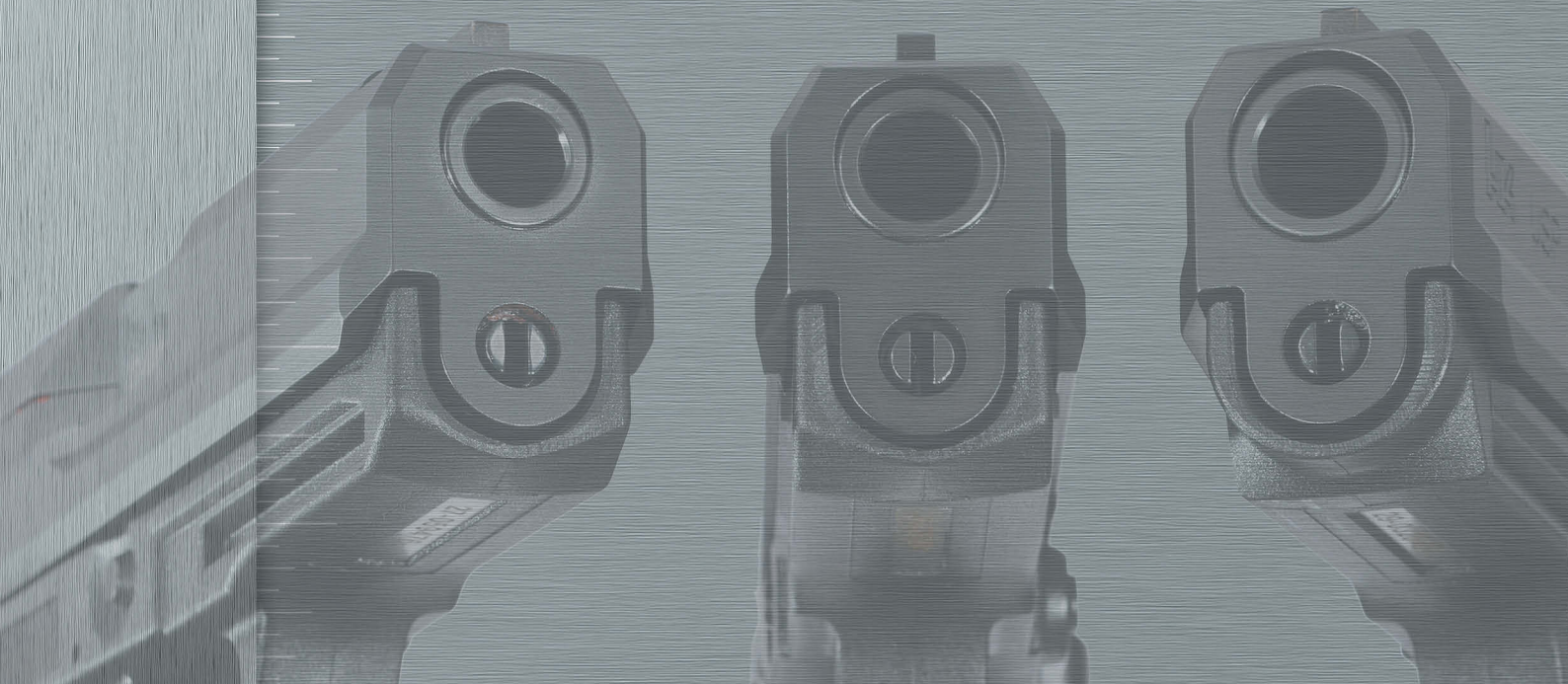
USP Compact
with extended magazine floorplate



9mm x 19

.40 S&W

.45 Auto



THE HECKLER & KOCH USP COMPACT

9mm x 19 / .40 S&W / .45 Auto

The USP Compact is a small, compact pistol available in calibers 9 mm x 19, .40 S & W and .45 Auto. Based on the Standard USP Models, these handy pistols combine compact size with an excellent accuracy.

Like the other USP Models, the USP Compact was designed to meet the most demanding requirements of military, security forces and civilian users. In order to reduce the overall length of the pistol, the patented USP buffer system was replaced by a specially designed flat recoil spring and a synthetic buffer element. The safety and decocking lever is of a slim design, but still within easy reach.

The modular design enables the safety and decocking lever to be easily retrofitted for left-handed shooters.

The USP Compact is safe, reliable and accurate, with the technical performance of a full sized pistol.



Features of the USP Compact

- The extractor doubles as a loaded chamber indicator
- The cold forged polygon barrel ensures a long service life as well as excellent accuracy
- Ambidextrous magazine release
- Assembly rail offers the possibility of installation of tactical accessories
- Extremely corrosion and scratch resistant slide
- The safety blocks the hammer and firing pin
- High strength polymer frame
- Highest functional reliability under all climatic conditions
- Various trigger systems: Single Action/Double Action/Double Action only

Pistol	Caliber	Length	Barrellength	Sight Radius	Height/width	Weight ¹	Single Action	Double Action	Sights	Mag. capacity
USP Compact	9mm x 19	173 mm	91 mm	135 mm	127/35 mm	727 g	20 N	50 N	fixed	13 cartridges
	.40 S&W	173 mm	91 mm	135 mm	127/35 mm	782 g	20 N	50 N	fixed	12 cartridges
	.45 Auto	180 mm	96 mm	143 mm	128/35 mm	797 g	20 N	50 N	fixed	8 cartridges

¹With empty magazine



THE HECKLER & KOCH USP STANDARD / CUSTOM SPORT

USP 9mm x 19 / .40 S&W / .45 Auto

Unique patented design features make the USP an extraordinary heavy duty pistol for all purposes. The modular system enables adaptation of the trigger and safety mechanisms to suit individual user requirements.

- Various trigger systems: Single Action, Double Action, Double action only
- Cold forged barrel made of high-strength special steel with polygon profile
- Ambidextrous magazine release
- Safety acting on firing pin and hammer
- High-strength polymer frame
- Open square notch rear sight and post type front sight with contrast points for fast target acquisition
- Highest functional reliability under all climatic conditions
- Simple caliber exchange possible due to separately available conversion kits:
From 9 mm x 19 › .40 S & W
From .40 S & W › 9 mm x 19
From .45 Auto › Expert 9 mm x 19
From .45 Auto › Elite 9 mm x 19



USP Custom Sport features:

- Target trigger with trigger stop
- Adjustable micrometer rear sight
- Extended magazine floor plate

Pistol	Caliber	Length	Barrel length	Sight Radius	Height/width	Weight ¹	Single Action	Double Action	Sights	Mag. capacity
USP	9mm x 19	195 mm	108 mm	158 mm	135/37 mm	770 g	20 N	50 N	fixed	15 cartridges
	.40 S&W	195 mm	108 mm	158 mm	135/37 mm	821 g	20 N	50 N	fixed	13 cartridges
	.45 Auto	201 mm	112 mm	161 mm	142,5/37 mm	887 g	20 N	50 N	fixed	12 cartridges

Pistol	Caliber	Length	Barrel length	Sight Radius	Height/width	Weight ¹	Single Action	Double Action	Sights	Mag. capacity
USP Custom Sport	9mm x 19	195 mm	108 mm	167 mm	145/37 mm	770 g	17 N	50 N	adjustable	15 cartridges
	.40 S&W	195 mm	108 mm	167 mm	145/37 mm	821 g	17 N	50 N	adjustable	13 cartridges
	.45 Auto	201 mm	112 mm	171 mm	150/37 mm	887 g	17 N	50 N	adjustable	12 cartridges

¹ With empty magazine



THE HECKLER & KOCH USP P8

9mm x 19 - The Service Pistol of the Federal German Armed Forces

After exhaustive comparative trials, the Federal German Armed Forces decided in favor of the P8 as the best handgun and adopted it as their new service pistol. The P8 includes the following features which differentiate it from the model USP:

- P8-specific arrangement of safety and decocking lever
- Transparent magazine with improved dust protection
- Barrel with lands and grooves profile



Pistol	Caliber	Length	Barrellength	Sight Radius	Height/width	Weight ¹	Single Action	Double Action	Sights	Mag. capacity
P8	9mm x 19	195 mm	108 mm	158 mm	135/38,5 mm	770 g	20 N	50 N	fixed	15 cartridges

¹ With empty magazine



The USP Expert was developed especially for target shooters. Clarification of the performance specifications and prototype trials were carried out in close cooperation with national and international renowned target shooters.

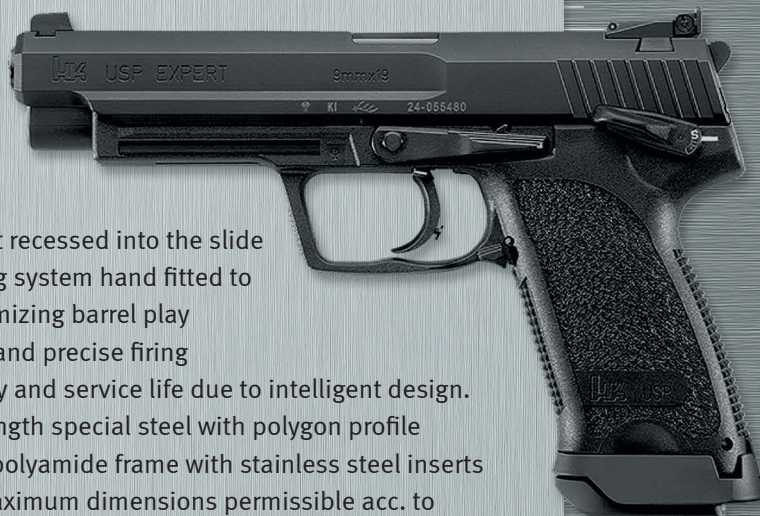
The result is a target pistol with universal application for most of the large bore disciplines of BDS, DSB as well as other unions. With this target pistol, HK meets requirements of the world elite.



THE HECKLER & KOCH USP EXPERT

USP 9mm x 19 / .40 S&W / .45 Auto

In addition to the USP standard features, the EXPERT has specific features which make it what it is: One of the world's best target pistols.



- Long sight radius > Approx. 190 mm
- Barrel length > 132
- Adjustable LPA micrometer rear sight recessed into the slide
- High intrinsic accuracy due to locking system hand fitted to the particular pistol plus o-ring minimizing barrel play
- Optimum grip angle - both for rapid and precise firing
- Highest possible functional reliability and service life due to intelligent design.
- Cold-forged barrel made of high strength special steel with polygon profile
- High strength glass fiber reinforced polyamide frame with stainless steel inserts
- Optimised balance exploiting the maximum dimensions permissible acc. to target shooting guidelines
- Target trigger with adjustable trigger stop

9mm X 19

- Ideal for shooters practising both the DSB disciplines and practical shooting
- Increased magazine capacity of 18 cartridges
- Standard jet funnel to increase hand gripping surface and for quicker magazine changes
- Low ammunition price
- Conversion kits available for caliber .40 S & W and into USP standard version

.40 S&W

- For top shooters in the IPSC discipline
- Magazine capacity increased to 16 rounds
- Standard jet funnel to increase hand gripping surface and for quicker magazine changes
- Conversion kits available for caliber 9 mm x 19

.45 AUTO

- For precision shooters in the centerfire discipline and for practical shooting
- 12 round magazine capacity
- Conversion kits available for various calibers

Pistol	Caliber	Length	Barrellength	Sight Radius	Height/width	Weight	Single Action	Double Action	Sights	Mag. capacity
USP Expert	9mm x 19	224 mm	132 mm	190 mm	149/45 mm	865 g	17 N	50 N	adjustable	18 cartridges*
	.40 S&W	224 mm	132 mm	190 mm	149/45 mm	875 g	17 N	50 N	adjustable	16 cartridges*
	.45 Auto	224 mm	132 mm	190 mm	151/45 mm	850 g	17 N	50 N	adjustable	12 cartridges

*with Jet funnel

THE HECKLER & KOCH USP ELITE

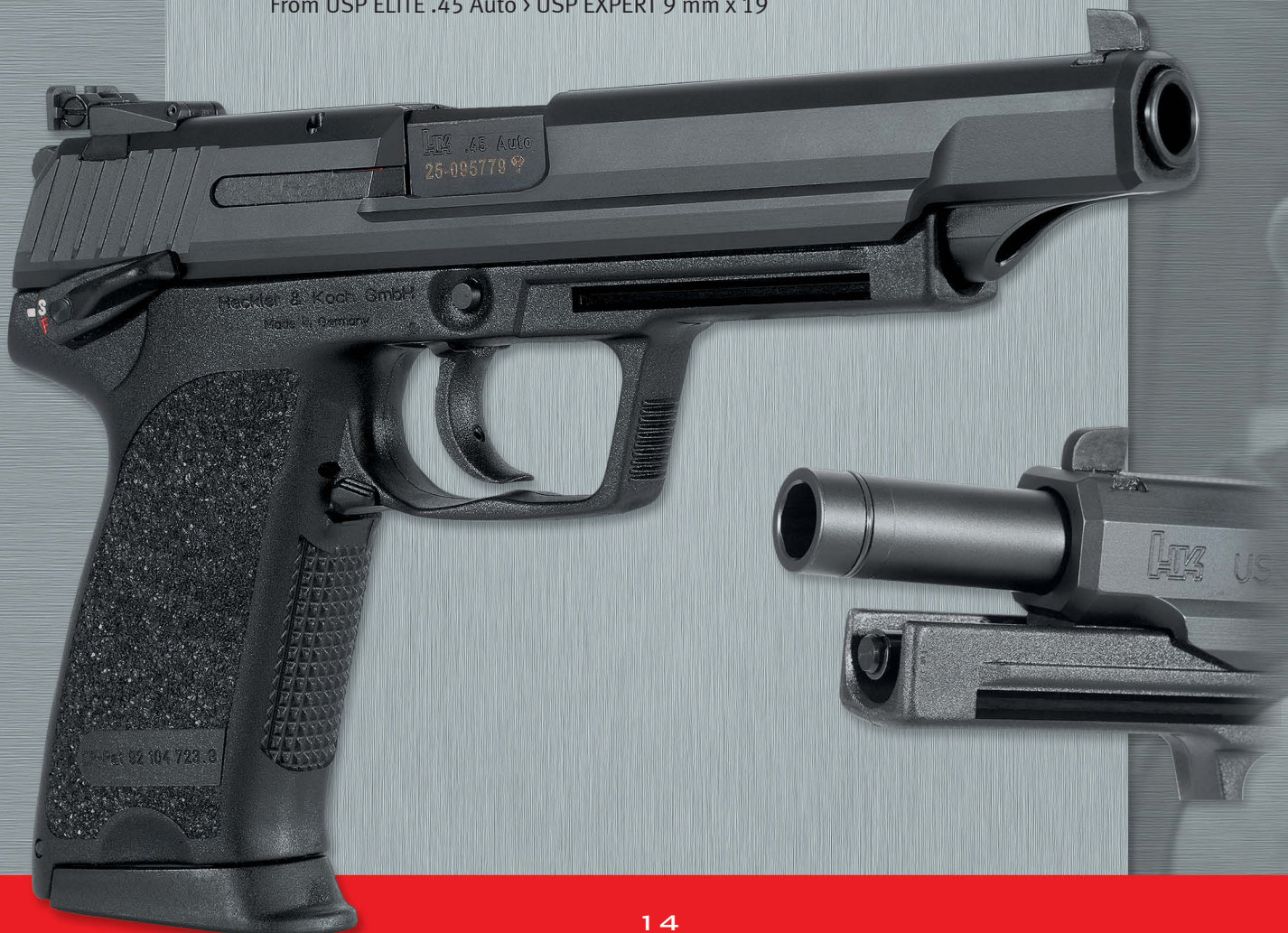
USP 9mm x 19 / .45 AUTO

The USP Elite has been designed specifically for the various large bore disciplines of the DSB, BDS and BDMP.

This model offers exceptional features for an affordable price.

The USP Elite in detail:

- Barrel length > 153 mm
 - Sight radius > 212 mm
 - High intrinsic accuracy due to locking system hand fitted to the particular pistol plus o-ring minimizing barrel play
 - Adjustable LPA micrometer rear sight recessed into the slide
 - Target trigger with adjustable trigger stop
 - Optimum grip angle
 - Optimised balance exploiting the maximum dimensions permissible acc. to target shooting guidelines
 - Cold-forged barrel made of high strength special steel with polygon profile
 - High strength glass fiber reinforced polyamide frame with stainless steel inserts
 - Patented buffer system to minimize recoil forces
 - Easy caliber exchange by separately available conversion kits
- From USP ELITE .45 Auto > USP Elite 9 mm x 19
From USP ELITE .45 Auto > USP EXPERT 9 mm x 19





Pistol	Caliber	Length	Barrellength	Sight Radius	Height/width	Weight	Single Action	Double Action	Sights	Mag. capacity
USP Elite	9mm x 19	240 mm	153 mm	212 mm	149/45 mm	920 g	17 N	50 N	adjustable	18 cartridges*
	.45 Auto	240 mm	153 mm	212 mm	147/45 mm	860 g	17 N	50 N	adjustable	12 cartridges

*with Jet funnel

THE HECKLER & KOCH USP TACTICAL

USP TACTICAL .45 Auto - The Service Pistol for Special Forces

The USP Tactical features resemble those of the Mark 23. It has been designed for users preferring a more compact pistol.

Special units all over the world have decided in favor of this model. But not only security forces appreciate the USP TACTICAL. With it, also target shooters of the various associations have found a target weapon which has remarkable properties:

- High intrinsic accuracy due to o-ring insert minimizing barrel play
- Adjustable micrometer rear sight
- Extended magazine floor plate
- Extended barrel (5")



In addition to those, there are the usual USP characteristics:

- Modular design
- Long service life
- Extreme drop safety
- Conversion kits separately available

Pistol	Caliber	Length	Barrel length	Sight Radius	Height/width	Weight ¹	Single Action	Double Action	Sights	Mag. capacity
USP Tactical	.45 Auto	216 mm	129 mm	171 mm	154/38,5 mm	916 g	17 N	50 N	adjustable	12 cartridges

¹ With empty magazine



**THE HECKLER & KOCH
MARK 23**
.45 Auto

The ultimate service weapon of the
US ARMY SPECIAL OPERATIONS COMMAND

Superior equipment for the best units. The H&K Mark 23 defeated all competitors after being subjected to the toughest comparative trials of the US ARMY SPECIAL OPERATIONS COMMAND. It was adopted under the designation MK23 MOD.O, US SOCOM.

The tests which had to be successfully passed included the following:

- 30 000 round endurance firing test with + P - ammunition
- Test at extreme temperatures + 73°C /-50°C
- 96 hour salt spray test
- Sand, dust , mud test
- 96 hour surf simulation
- Harshest drop tests
- Maximum accuracy and precision

Features of the MARK 23:

- Buffer system to minimize recoil forces
- Ambidextrous safety lever
- Ambidextrous magazine release
- Separate decocking lever on the left side
- Extremely corrosion resistant surface coating of all metal components
- Hard chrome plated polygon barrel



Pistol	Caliber	Length	Barrellength	Sight Radius	Height/width	Weight	Single Action	Double Action	Sights	Mag. capacity
MARK 23	.45 Auto	245 mm	149 mm	197 mm	150/40 mm	1100 g	20 N	50 N	fixed	12 cartridges

THE HECKLER & KOCH USC

Selfloading Carbine USC .45 ACP

Derived from the HK UMP, the USC is a civilian utility carbine that uses the classic hard-hitting .45 ACP cartridge.

Matched with the simple and ultra-reliable blowback operating system, the HK USC is a radical departure from traditional firearms designs.



Extensive use of the same durable, reinforced polymers used on HK's new line of military and police arms ensures light weight and durability. And user ergonomics are not sacrificed. The skeletonized buttstock is topped with a comfortable rubber cheek rest and recoil pad. The web of the pistol grip is open for a comfortable shooting handhold. Hard points located on the top and front of the receiver make attachment of optional Picatinny Rails easy, allowing almost any kind of sighting system or accessory to be mounted.

This selfloading carbine has been popular throughout Germany's sport shooting community due to its various BDS and BDMP scope discipline capabilities.

Other features included:

- Bolt assembly and barrel made of high grade steel.
- Cold-forged 16" Match barrel Sling swivels.
- Rear sight adjustable for windage and elevation
- Mounting points for Weaver rail for assembly of a wide range of sighting units
- Ambidextrous safety lever
- Bolt catch lever. Bolt remains open after last shot has been fired, providing a quicker magazine reload
- 10 round plastic magazine



USC Standard



USC .45 ACP
with Red Dot Sight

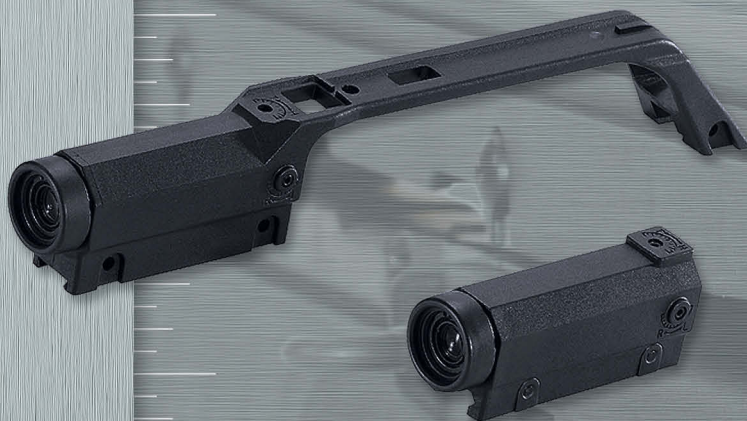


Selfloading Carbine	Caliber	Length	Barrellength	Sight Radius	Weight (w/o mag.)	Trigger pull	Sights	Mag. capacity
USC	.45 ACP	900 mm	406,4 mm	32,7 mm	2720 g	25 N	adjustable	10 cartridges

Principle of operation: Recoil operated weapon



SL8 Standard



SL8

- carrying handle with 3 power optical sight
- 3 power optical sight

SL8

Short and long Weaver rails for optical or mechanical sights. Available as aluminium or synthetic version.

- Synthetic short rail with open sights
- Synthetic short rail
- Aluminium rail
- Aluminium short rail



Target rifle	Caliber	Length	Barrellength	Sight Radius	Weight (w/o mag.)	Trigger pull	Sights	Mag. capacity
SL8	.223 Remington	980 - 1030 mm	510 mm	510 mm	4 200 g	Approx. 20 N	adjustable	10 cartridges

Principle of operation: Gas - operated weapon with rotating bolt head

THE HECKLER & KOCH SL8

The SL8 .223 REM Target Rifle

The SL8 embodies a new rifle generation in target shooting. Its proven ergonomic design and extreme operational reliability meet the strictest requirements.

The technology of the G36, the Assault Rifle of the Federal German Armed Forces, makes the SL8 very user-friendly and minimizes maintenance requirements. It works according to the proven principle of the gas operated weapon with rotating bolt head and has a series of special advantages:

The SL8 Features:

- Low weight and high corrosion resistance due to the use of high quality polyamides
- Outstanding accuracy due to heavy, hard chrome plated barrel with landsand grooves profile, cold forged together with the cartridge chamber
- Simple, fast handling, equally suitable for right and left handed shooters
- Centrally arranged cocking lever right on the bolt
- Fast magazine change due to automatic bolt catch when magazine is empty
- Ergonomic design, individually adaptable stock by means of adjustable stock length and interchangeable cheek piece.
- Long, continuous sight rail which allows the use of a large variety of sighting systems.

SL8
Riflebag



SL8
with carrying handle,
3 power, optical
sight, reflex sight and bipod

**THE HECKLER & KOCH
MATCH RIFLE MR223 / MR308**

Flexible user needs flexible solutions!



Modular, variable and reliable:

Not only do the MR223 and the MR308 already fulfil the requirements of a modern sports gun, but they set new standards for reliability, precision and handling as well.

Perfect sporting guns should not only work well under very different environmental conditions and the dirt conditions resulting out of these, but they should also be easily used. These attributes are all fulfilled by the MR223 and the MR308 which are safe choices for every shooter.

We are talking about weapons systems which guarantee the user a perfect combination of individual choices and total reliability and technical functionality.

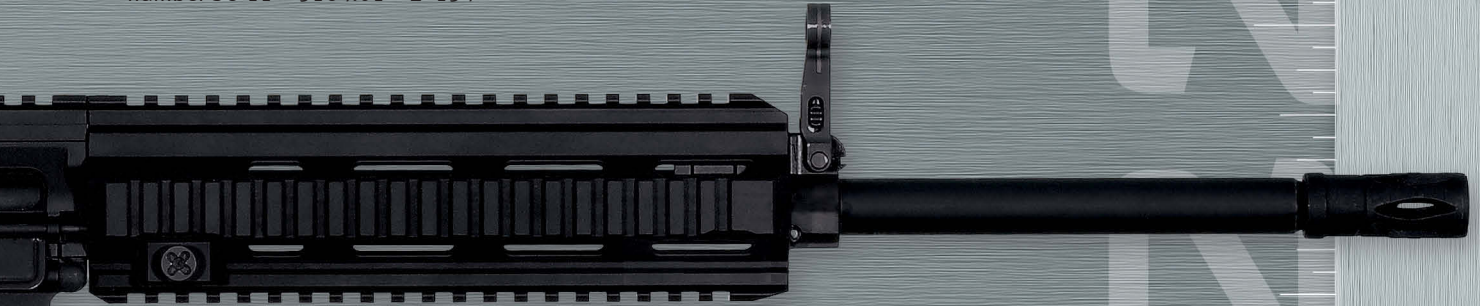
The patented free floating picatinny rail mounted hand guard from H&K (MIL-STD-1913) offers the ability to use bi-pods, optics and many other accessories.

There are a lot of accessories available for the MR223 and the MR308 which makes it a perfect weapons system. A further advantage is that, next to the H&K-developed accessories, a wide range of commercially off the shelf available accessories can be used as well without modifications.

MR308

KEY FEATURES WITHOUT COMPROMISE:

- wide range of accessories
- MR223 magazine well fits original M4/M16 aluminium and HK magazines
- patented (free floating) hand guard system allows for 360° individuality
- excellent results in all tests under adverse climate conditions
- the technology of the G36 guarantees a high level accuracy, functioning and handling
- length adjustable buttstock with additional locking device (Space compensation)
- MR223 and MR308 are civilian small arms according to public classification of the German federal bureau of investigation (Bundeskriminalamt-BKA), reference number SO 11 – 5164.01 – Z -154



MR223 with iron sights

locking pin
(free from float)

MR308 with accessories

Semi autom. rifle	Calibre	Length	Barrel length	Weight w/o mag.	Trigger pull	Mag. capacity
MR223	.223 Remington	860 - 950 mm	420 mm	ca. 3700 g	ca. 24 N	10/20/30 cartridges
MR308	.308 Win	1007 - 1087 mm	508 mm	ca. 4800 g	ca. 24 N	10/20 cartridges



MR223 10/20/30 rds.
MR308 10/20 rds.



Recoil pad, concave
and convex with
vertical foregrip



different grips V1, V2, V3



Flash hider



Protective rail and
vertical foregrip



HK Adapter and Harris bipod



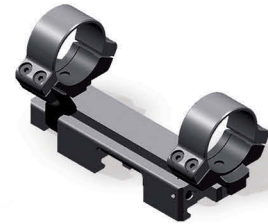
Foldable front sight



Adjustable sight



Foldable sight



Quick mount



Additional accessories (carrying sling, sling adaptor for Pica rail, case catcher, etc.)

Technical data subject to change

Pistol	Caliber	Length	Barrel length	Sight radius	Height/Width	Weight (w. empty Mag.)	SA (Single Action)	DA (Double Action)	Sights	Magazine Capacity
P30/P30S	9mm x 19	181 mm	98 mm	148,5 mm	138/34,8 mm	740 g	24 N	51 N	fixed	15 Cartridges
P30/P30S	.40 S&W	181 mm	98 mm	148,5 mm	138/34,8 mm	780 g	24 N	51 N	fixed	13 Cartridges
P30 L/P30 LS	9mm x 19	196 mm	113 mm	163,5 mm	138/34,8 mm	780 g	24 N	51 N	fixed	15 Cartridges
P30 L/P30 LS	.40 S&W	196 mm	113 mm	163,5 mm	138/34,8 mm	820 g	24 N	51 N	fixed	13 Cartridges
P2000	9mm x 19	174 mm	93 mm	141 mm	129/34,8 mm	710 g	20 N	50 N	fixed	13 Cartridges
P2000	.40 S&W	174 mm	93 mm	141 mm	129/34,8 mm	750 g	20 N	50 N	fixed	12 Cartridges
P2000 SK	9mm x 19	162,5 mm	83 mm	131,5 mm	115,5/34,8	680 g	20 N	50 N	fixed	10 Cartridges
P2000 SK*	.40 S&W	162,5 mm	83 mm	131,5 mm	115,5/34,8	720 g	20 N	50 N	fixed	9 Cartridges
USP	9mm x 19	173 mm	91 mm	135 mm	127/35 mm	727 g	20 N	50 N	fixed	13 Cartridges
Compact	.40 S&W	173 mm	91 mm	135 mm	127/35 mm	782 g	20 N	50 N	fixed	12 Cartridges
	.45 Auto	180 mm	96 mm	143 mm	128/35 mm	797 g	20 N	50 N	fixed	18 Cartridges
USP	9mm x 19	195 mm	108 mm	158 mm	135/37 mm	770 g	20 N	50 N	fixed	15 Cartridges
	.40 S&W	195 mm	108 mm	158 mm	135/37 mm	821 g	20 N	50 N	fixed	13 Cartridges
	.45 Auto	201 mm	112 mm	161 mm	142,5/37 mm	887 g	20 N	50 N	fixed	12 Cartridges
P8	9mm x 19	195 mm	108 mm	158 mm	135/38,5 mm	770 g	20 N	50 N	fixed	15 Cartridges
USP	9mm x 19	195 mm	108 mm	167 mm	145/37 mm	770 g	17 N	50 N	adjustable	15 Cartridges
Custom	.40 S&W	195 mm	108 mm	167 mm	145/37 mm	821 g	17 N	50 N	adjustable	13 Cartridges
Sport	.45 Auto	201 mm	112 mm	171 mm	150/37 mm	887 g	17 N	50 N	adjustable	12 Cartridges
USP	9mm x 19	224 mm	132 mm	190 mm	149/45 mm	865 g	17 N	50 N	adjustable	18 Cartridges*
Expert	.40 S&W	224 mm	132 mm	190 mm	149/45 mm	875 g	17 N	50 N	adjustable	16 Cartridges*
	.45 Auto	224 mm	132 mm	190 mm	151/45 mm	850 g	17 N	50 N	adjustable	12 Cartridges
USP Elite	9mm x 19	240 mm	153 mm	212 mm	149/45 mm	920 g	17 N	50 N	adjustable	18 Cartridges*
	.45 Auto	240 mm	153 mm	212 mm	147/45 mm	860 g	17 N	50 N	adjustable	12 Cartridges
USP Tactical	.45 Auto	216 mm	129 mm	171 mm	154/38,5 mm	916 g	17 N	50 N	adjustable	12 Cartridges
MARK 23	.45 Auto	245 mm	149 mm	197 mm	150/40 mm	1100 g	20 N	50 N	fixed	12 Cartridges

Target Rifle	Caliber	Length	Barrel length	Sight radius	Weight (without magazine)	Trigger pull	Sights	Magazine capacity
USC (Recoil operated)	.45 ACP	900 mm	406,4 mm	32,7 mm	2720 g	25 N	adjustable	10 Cartridges
SL8 (Gas-operated)	.223 Remington	980-1030 mm	510 mm	510 mm	4200 g	ca. 20 N	adjustable	10 Cartridges
MR223	.223 Rem	860-950 mm	420 mm	depends on sighting system	ca. 3700 g	ca. 24 N	–	10/20/30 Cartridges
MR308	.308 Win	1007-1087	508 mm	depends on sighting system	ca. 4800 g	ca. 24 N	–	10/20 Cartridges

Selfloading Pistols

	Conversion Kits										
	USP Standard 9mm x 19; .40 S&W	USP Standard .45 ACP	USP Compact 9mm x 19; .40 S&W	USP Compact .45 ACP	USP Custom Sport 9mm x 19; .40 S&W	USP Custom Sport .45 ACP	USP Expert 9mm x 19; .40 S&W	USP Expert .45 ACP	USP Elite 9mm x 19	USP Elite .45 ACP	USP Tactical .45 ACP
USP Standard 9mm x 19; .40 S&W	■				■		■		■		
USP Standard .45 ACP		■				■	■*	■	■	■	■
USP Compact 9mm x 19; .40 S&W			■								
USP Compact .45 ACP				■							
USP Custom Sport 9mm x 19; .40 S&W	■				■		■		■		
USP Custom Sport .45 ACP		■				■	■*	■	■	■	■
USP Expert 9mm x 19; .40 S&W	■				■		■		■		
USP Expert .45 ACP		■				■	■*	■	■	■	■
USP Elite 9mm x 19	■				■		■		■		
USP Elite .45 ACP		■				■	■*	■	■	■	■
USP Tactical .45 ACP		■				■	■*	■	■	■	■

* Only to 9mm x 19

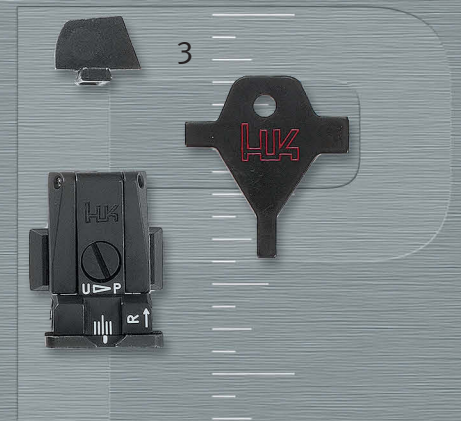
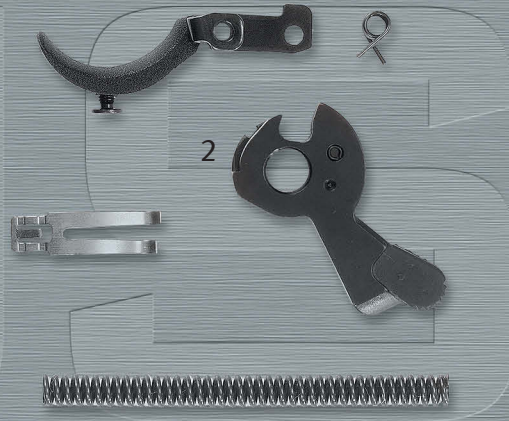




USP Elite Conversion Kit

From USP ELITE .45 Auto > USP ELITE 9mm x 19

From USP ELITE .45 Auto > USP EXPERT 9mm x 19



USP Tuning Accessories Consisting Of:

- 1 Extended magazine floor plate
- 2 Tuning set Target trigger
- 3 Target rear sight



USP Expert Conversion Kit

From USP EXPERT .45 Auto > USP EXPERT 9mm x 19

From USP EXPERT .40 S&W > USP EXPERT 9mm x 19